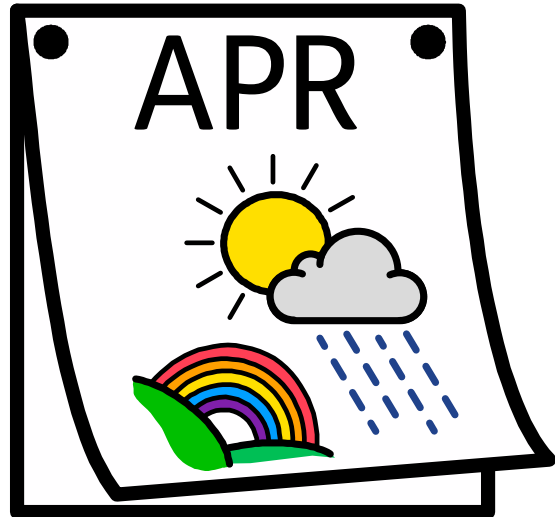


A



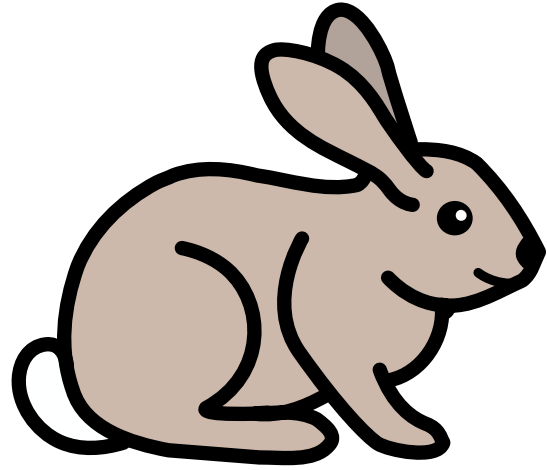
APRILE

B



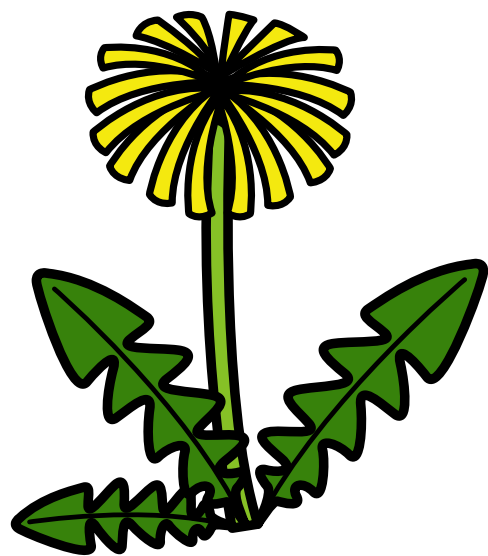
BRUCO

C



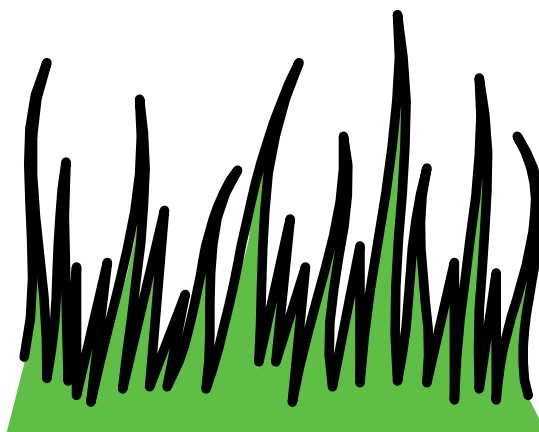
CONIGLIO

D



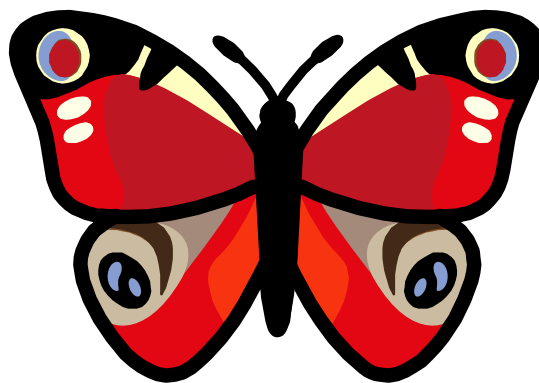
DENTE DI LEONE

E



ERBA

F



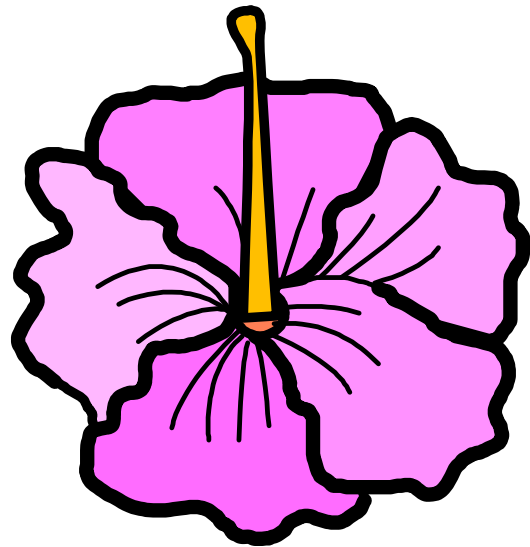
FARFALLA

G



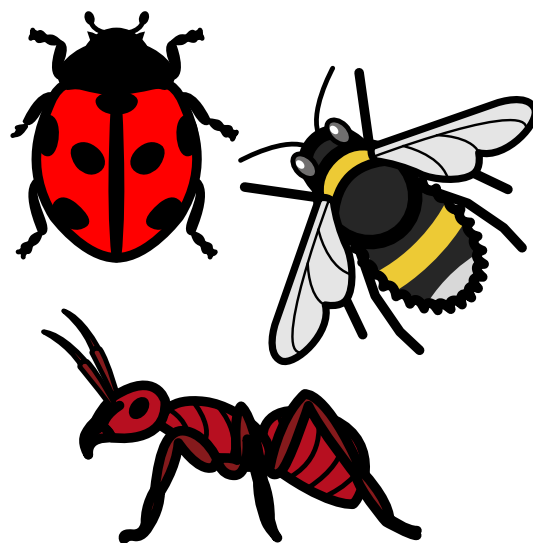
GIACINTO

H



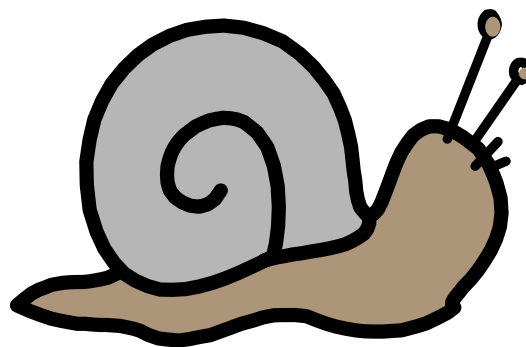
HIBISCUS

I



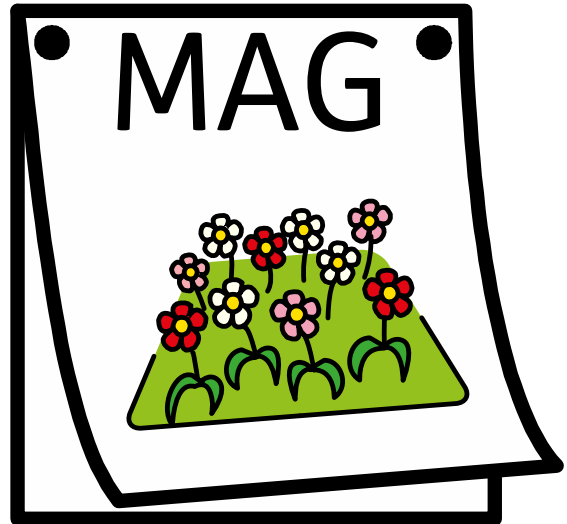
INSETTI

L



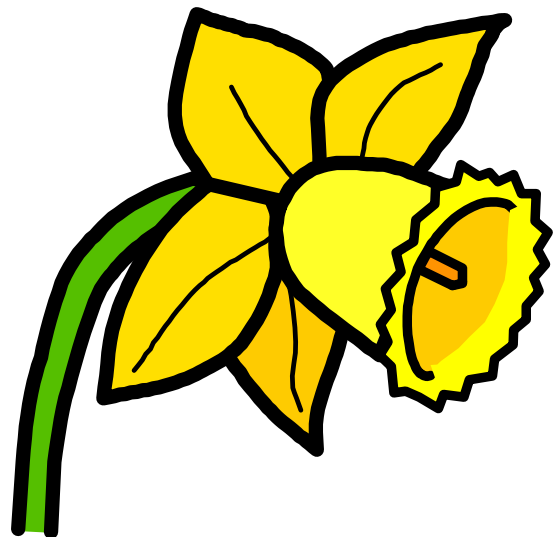
LUMACA

M



MAGGIO

N



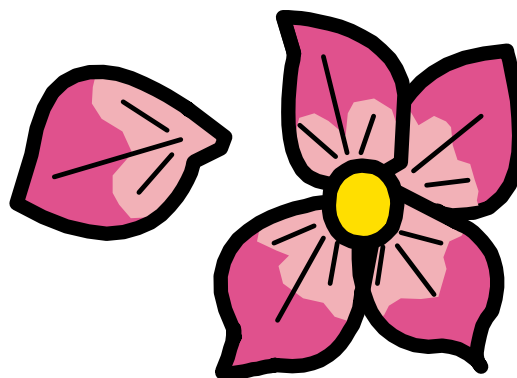
NARCISO

O



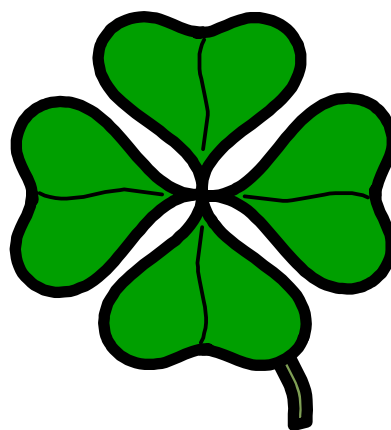
OMBRELLO

P



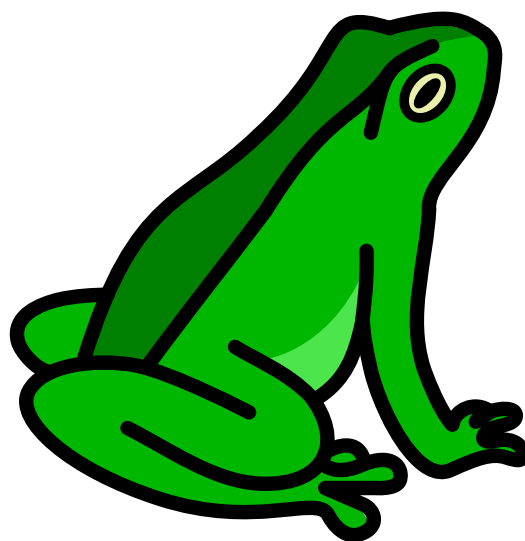
PETALO

Q



QUADRIFOGLIO

R



RANA

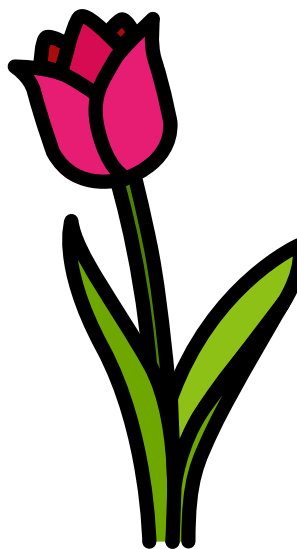


S



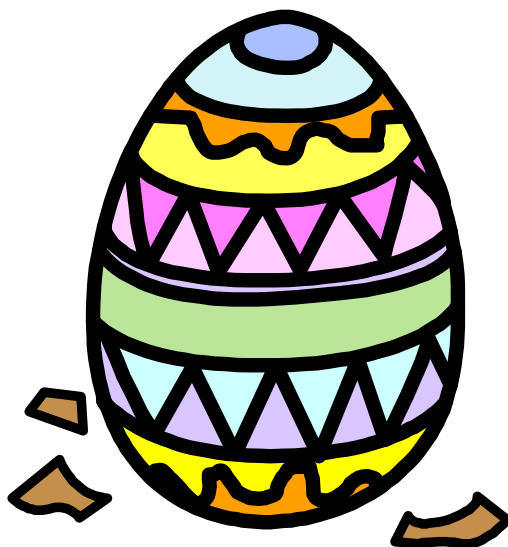
SCOIATTOLO

T



TULIPANO

U



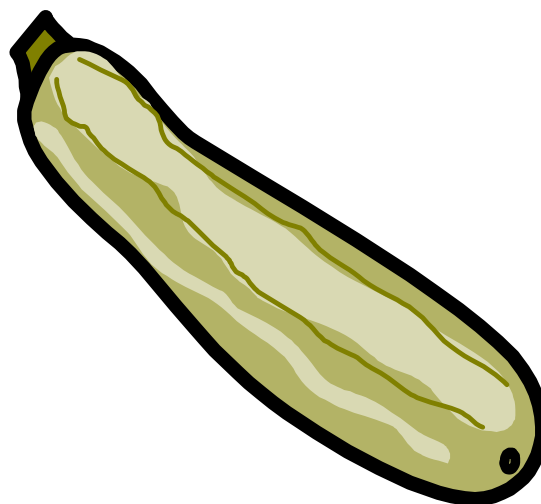
UOVO

V



VERDE

Z



ZUCCHINA